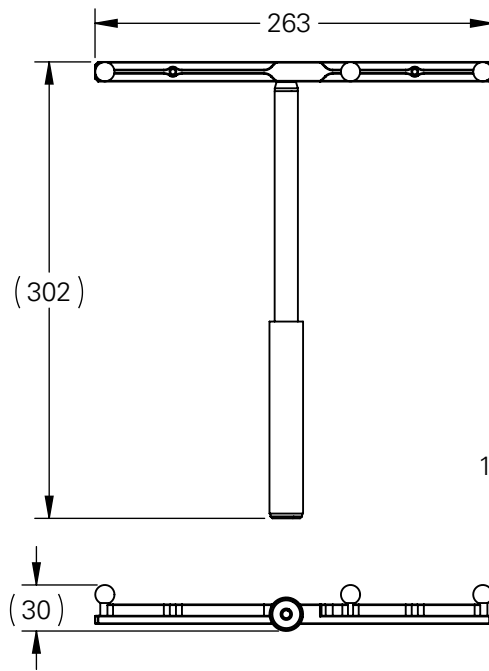
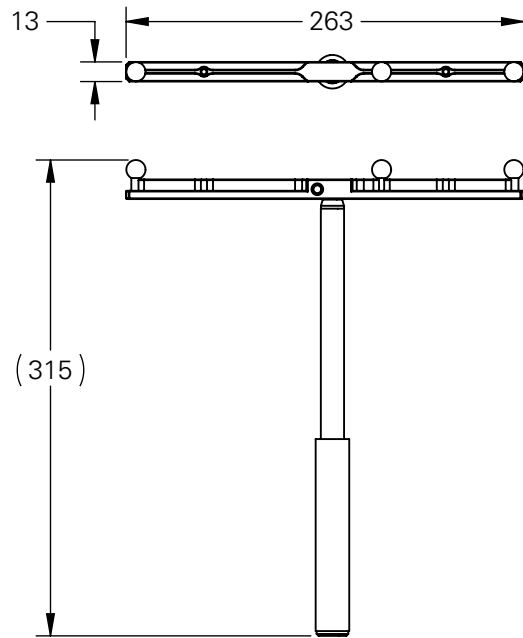
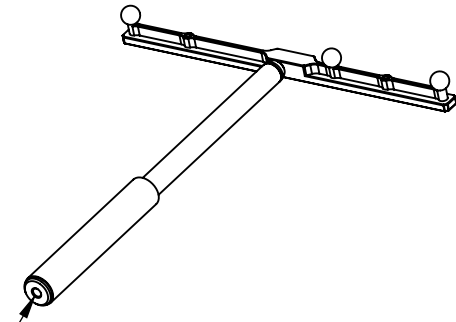


Standard Orientation

Alternate Orientation

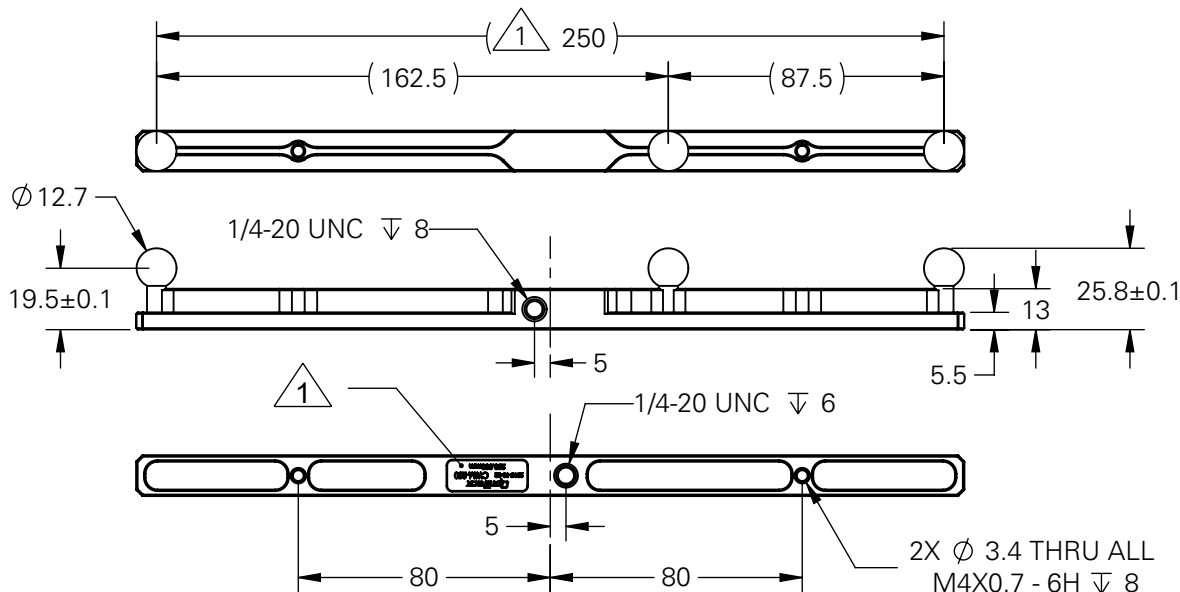
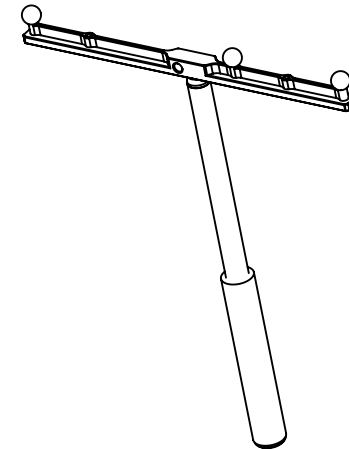


Alternate Orientation



1/4-20 UNC

Standard Orientation



△ Measured marker distance recorded on label has a tolerance of ±0.008 mm

**OptiTrack**

CWM-250 Technical Drawing

Tolerance (mm):  
(X) = Ref. X = ±0.05

Rev. A  
Date of Issue  
10/02/2015

Sheet  
1 OF 1